

Pottiputki planting tube

Products & Solutions for planting infield

Planting in the forest or plantation is today still done manually in most parts of the world. Where soil and site conditions allow, planting tools have been introduced to reduce the physical effort, improve ergonomics, increase productivity and optimize quality of planting.

The Pottiputki has since the late 1960's been developed in close cooperation with infield planting entrepreneurs. All tube types have been thoroughly tested and evaluated; both in special test rigs as well as out in the field, to meet the demands of infield planting.





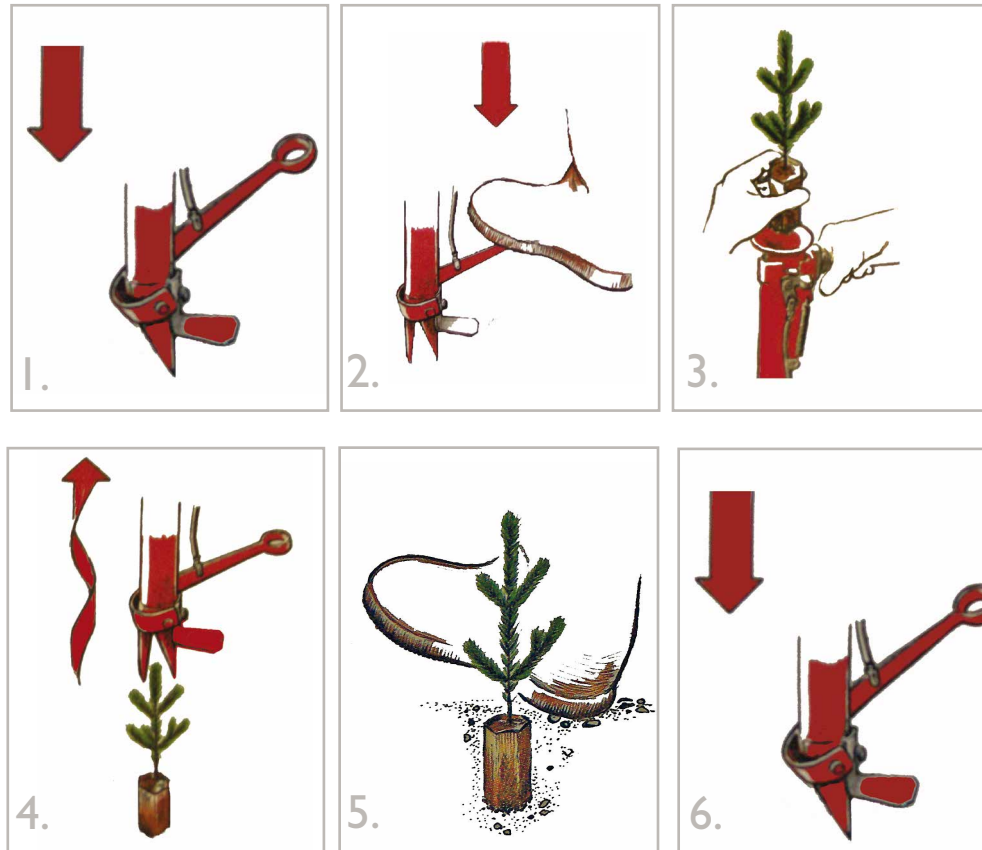
Technical Benefits & Key Features

- Suitable for planting all containerized seedlings (several tube diameters).
- Ergonomically correct working position.
- Adjustable planting depth.
- Light and comfortable for extended infield use.
- Fitted with designed handle; both single and double handles are available.
- Rubber coated handle fitted with damping spring.
- Jaws are oil-hardened.
- Sturdy and robust construction.

TECHNICAL DATA

No:	38	45	50	55	63	75
Internal diameter (mm):	36	43	48	53	61	73
Length, +/- 5mm:	925	940	935	970	940	935
Weight, +/- 2 %:	2480	2530	2770	2910	3120	3630

good ergonomics



Transplanting

1. Push the tube into the ground and step on the limiter until the appropriate depth is achieved.
2. Step on the opening pedal to open the jaws.
3. Drop the seedling into the tube.
4. Lift the tube out of the ground with a twisting motion to loosen any soil, which might be stuck in the jaws.
5. Tamp the seedling firmly into the ground with your foot on either side and complete with heel in front if needed.
6. Close the jaws by using the release lever. Take a new seedling with your free hand and choose the next transplanting site while moving forward.

